

Park to Playa Trail

Public Workshop #4

October 3, 2012



Project Funded By: Baldwin Hills Regional Conservation Authority



Workshop Agenda

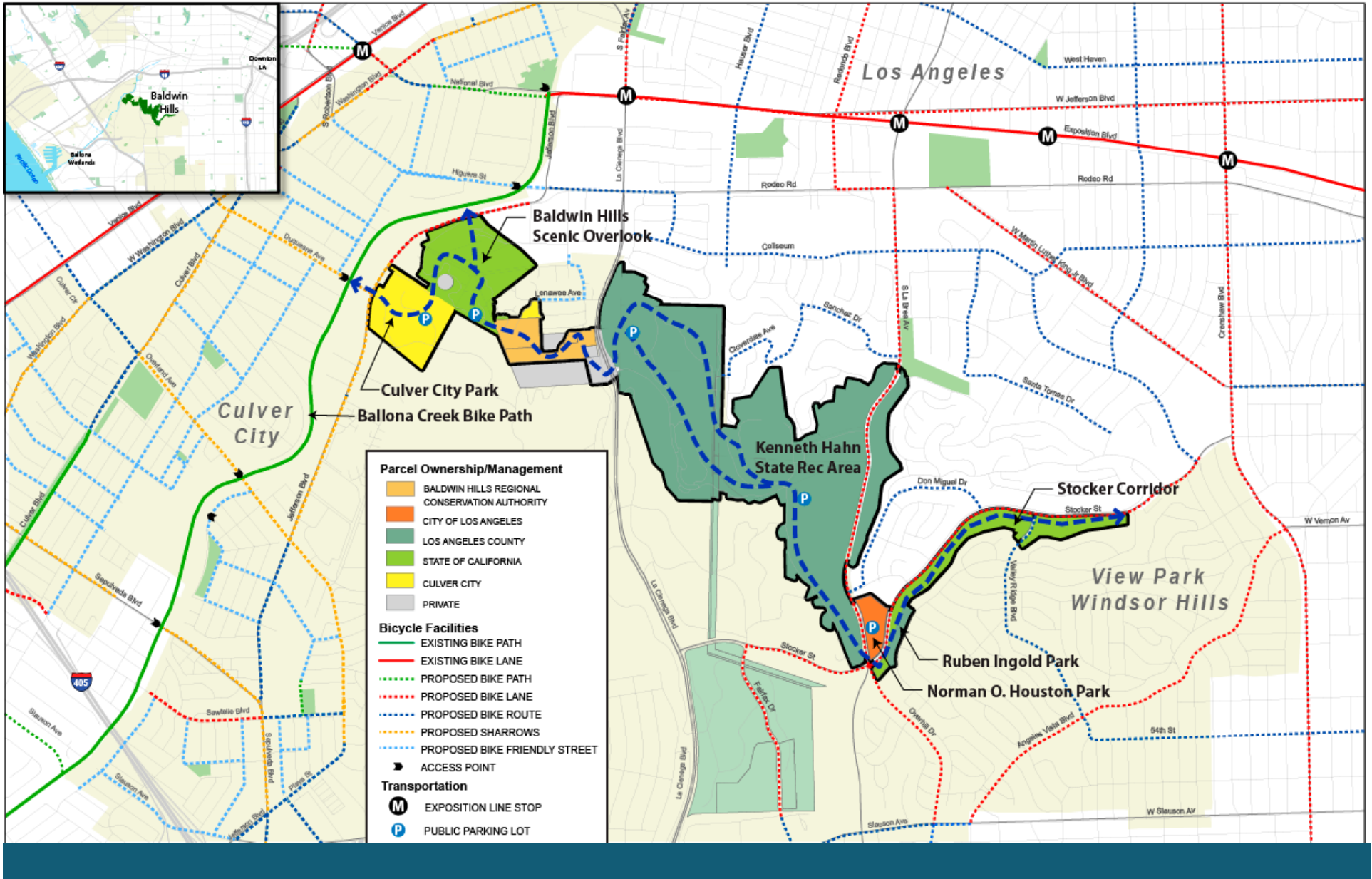


- Introductions
- Project Overview
- Project Description
- Next Steps
- Open House





Park to Playa Trail Study Corridor

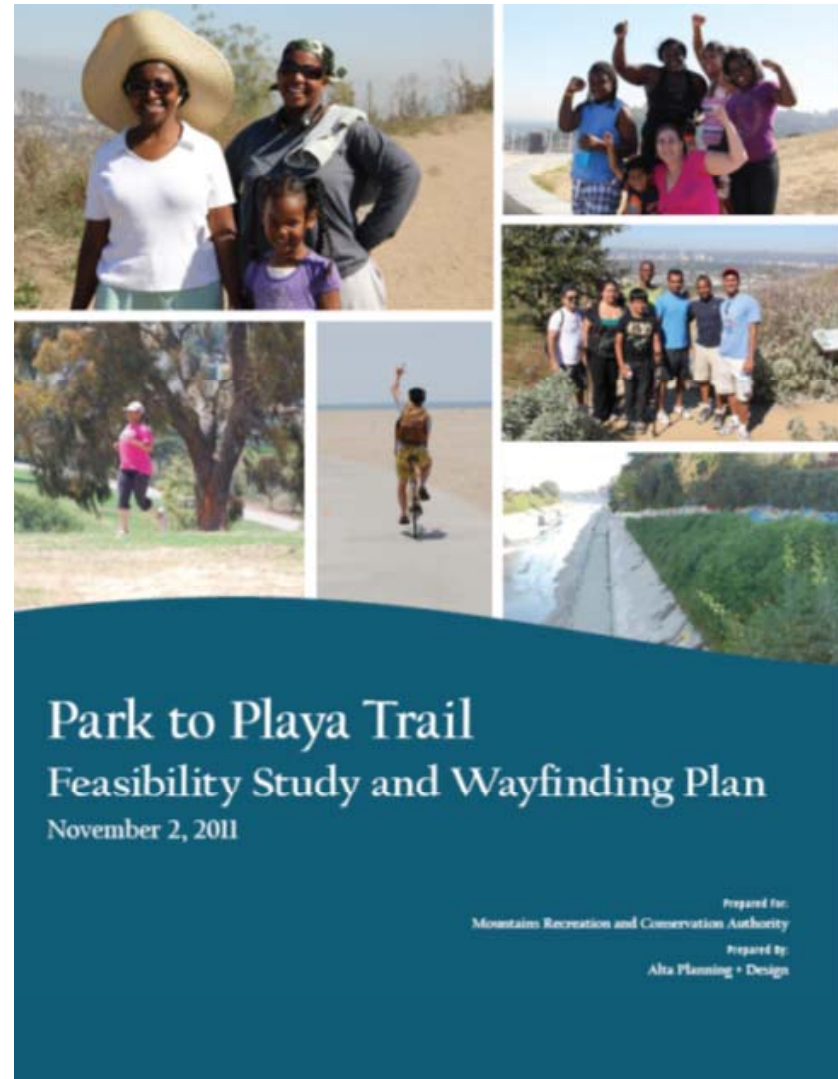




Project History

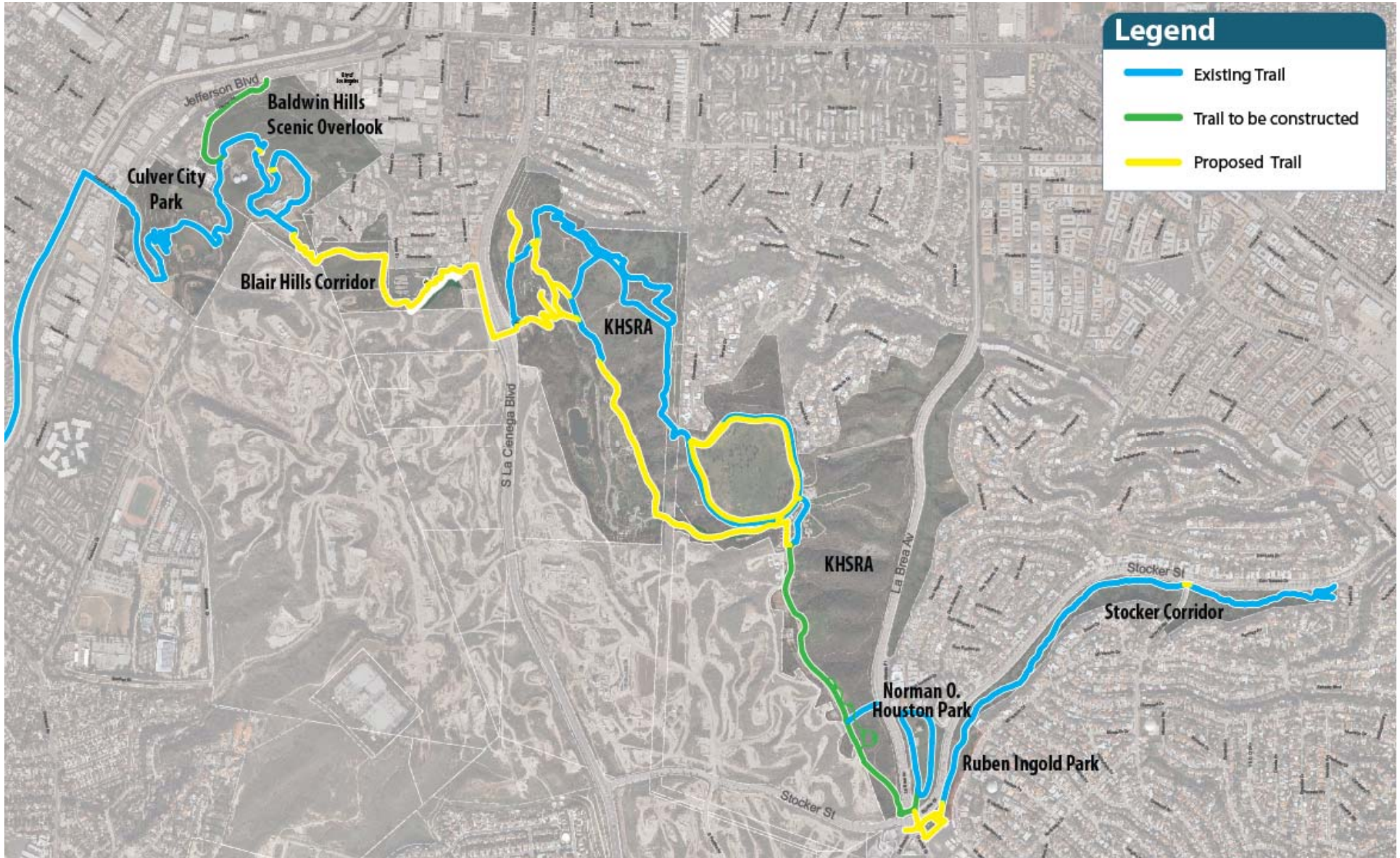


- Feasibility study completed in 2011
- Public Involvement during feasibility study
 - Public Workshops
 - Conducted On Site Interviews
 - Web Based Survey



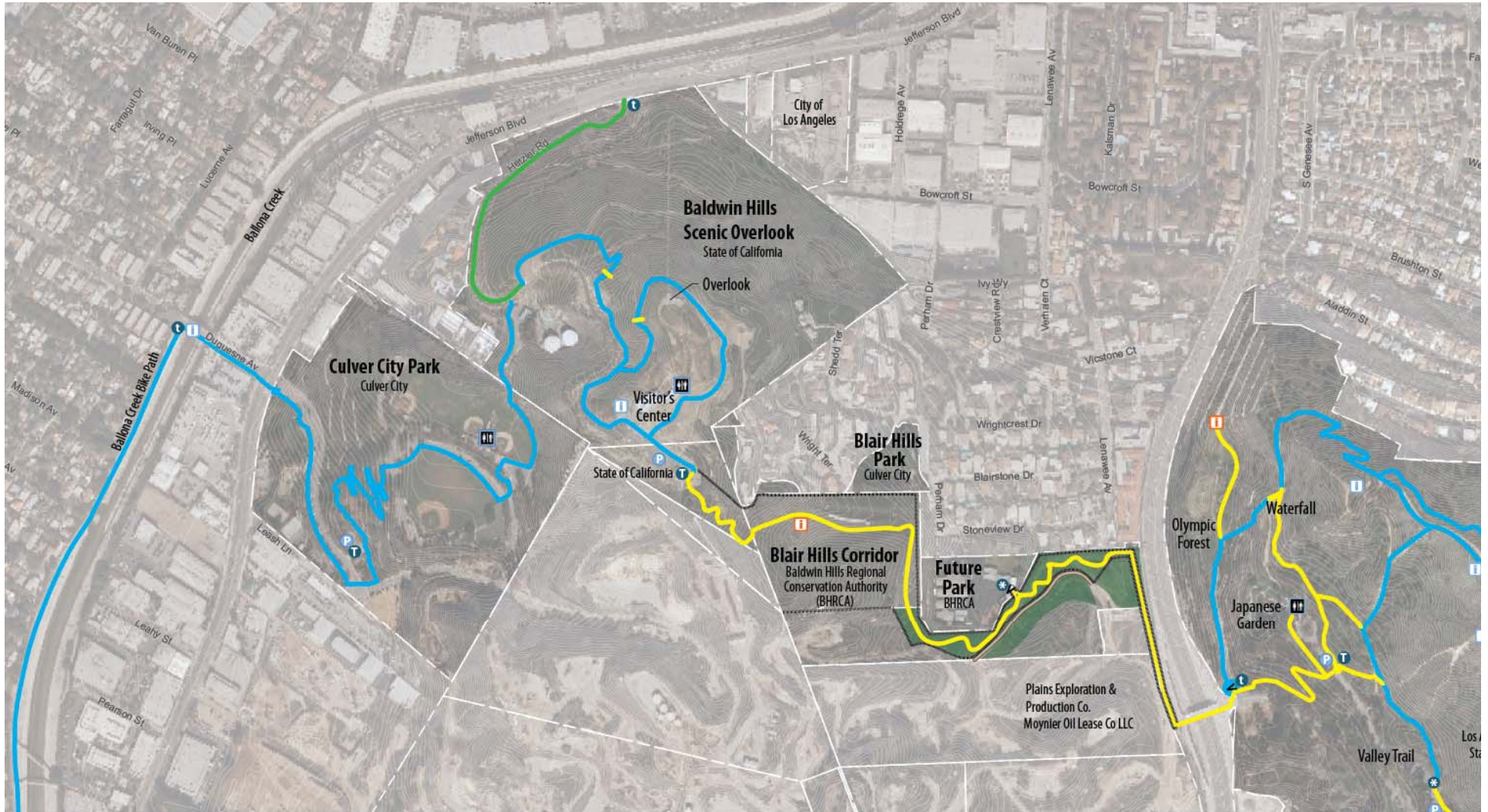


Trail Alignment- Making Connections





Trail Alignment- Making Connections



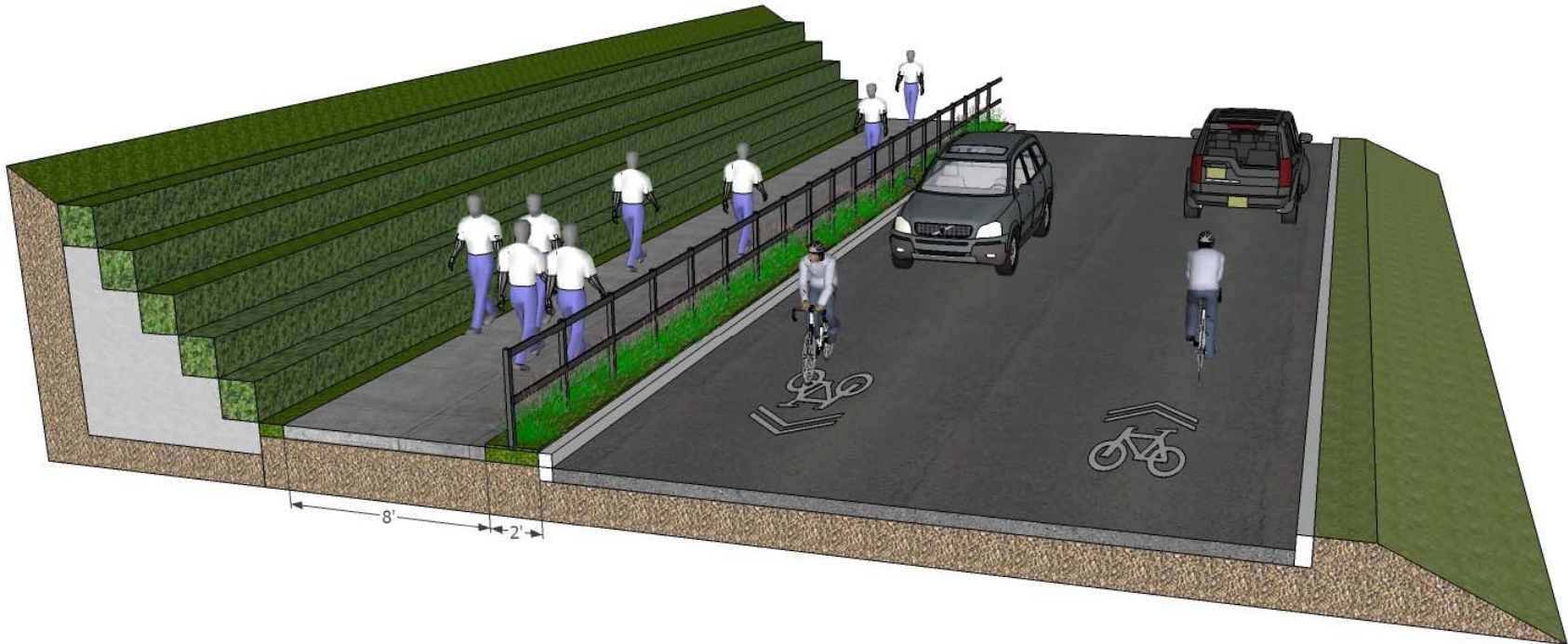


Trail Alignment- Making Connections



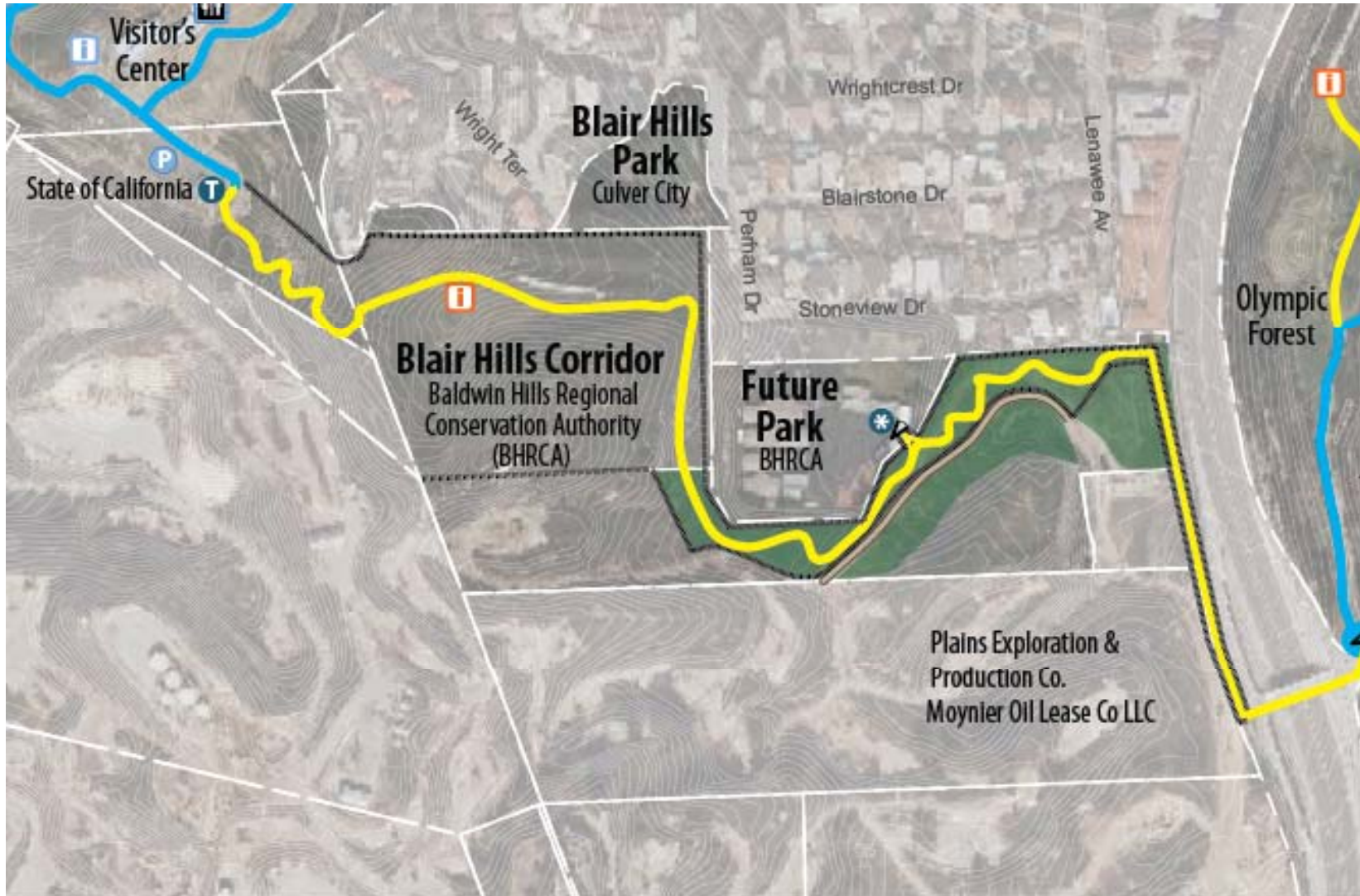


Trail Alignment- BHSO Hetzler Road



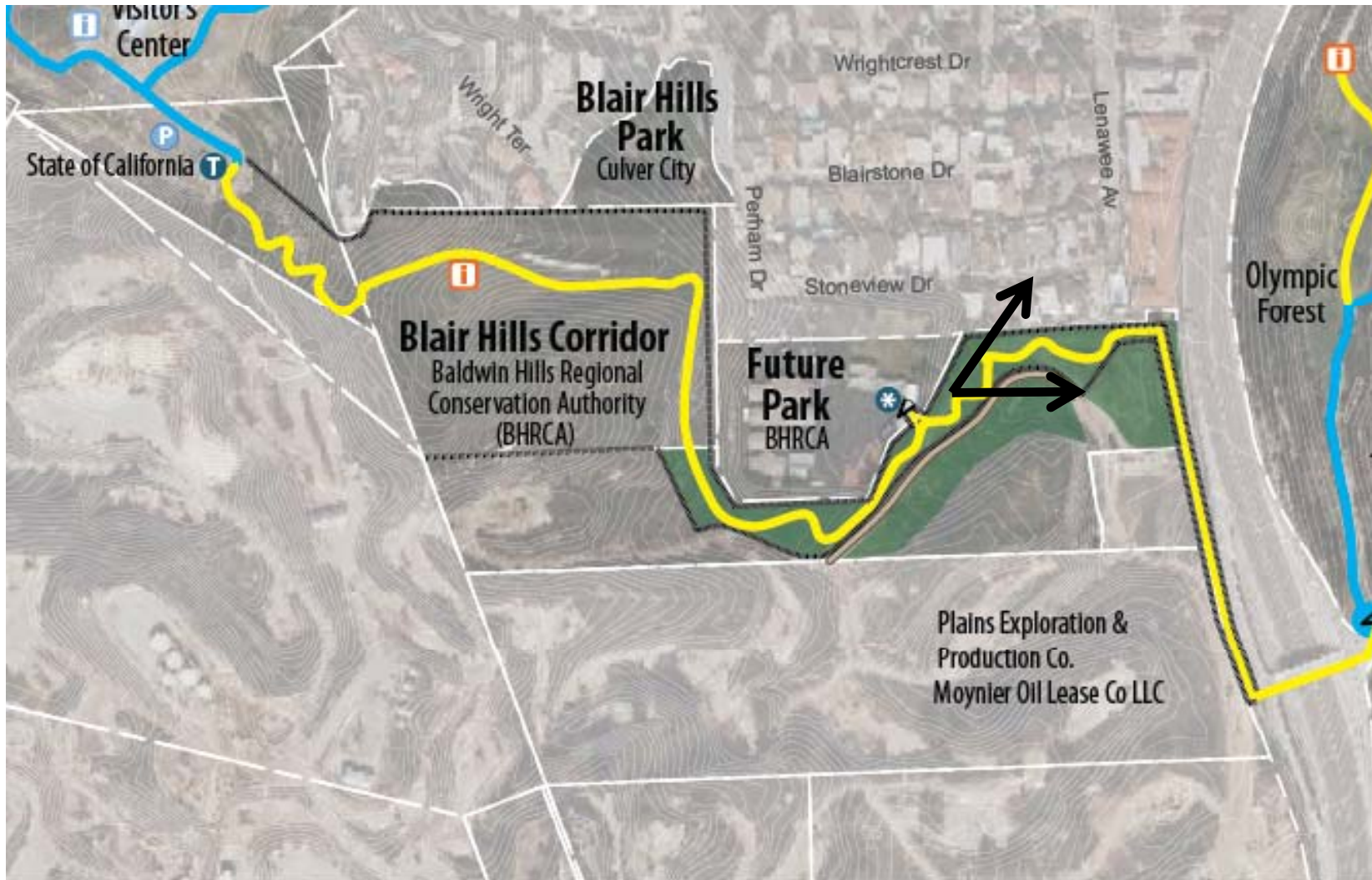


Trail Alignment- Blair Hills Corridor





Trail Alignment- Blair Hills Corridor





Trail Alignment- Blair Hills Corridor



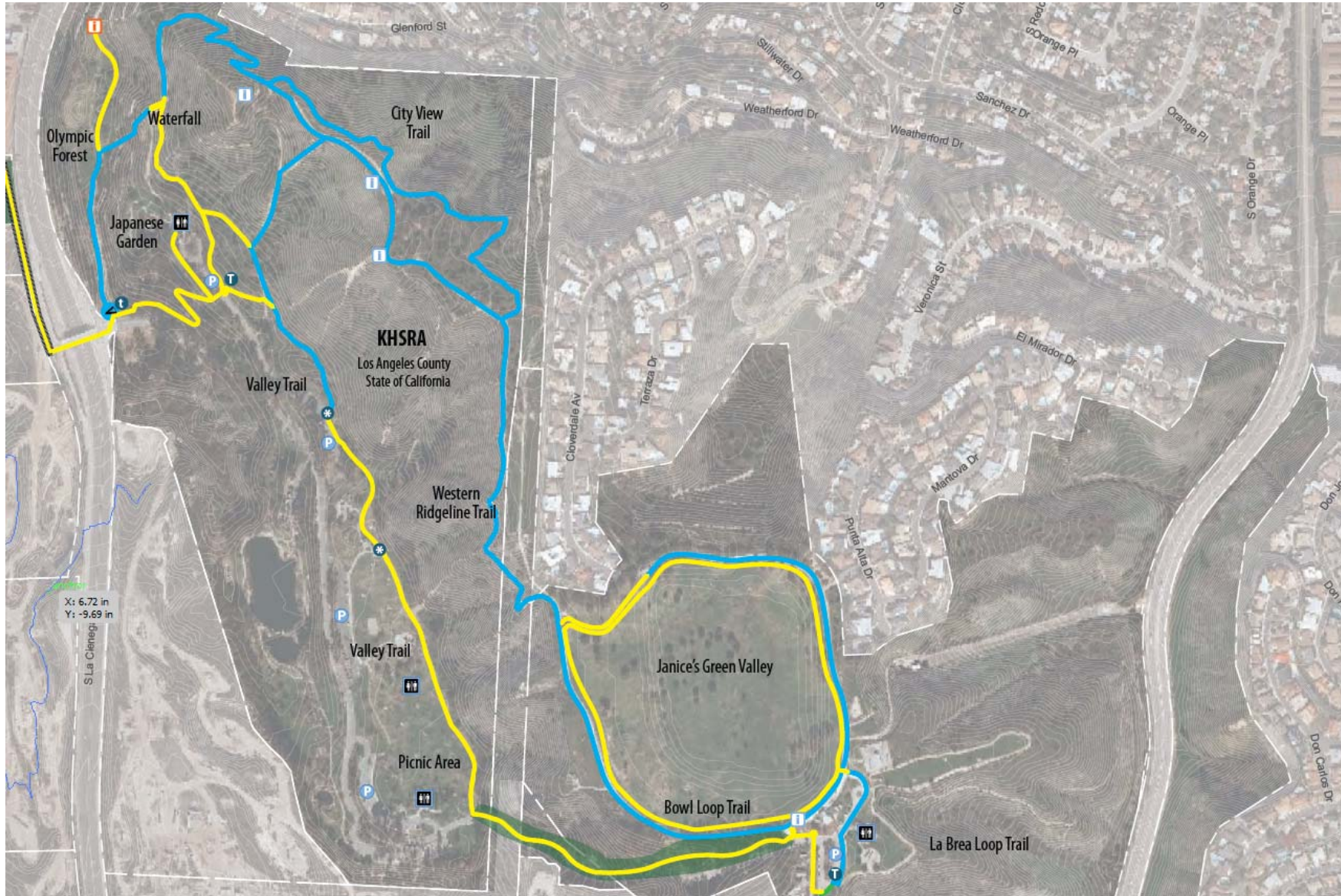


Trail Alignment- Blair Hills Corridor





Trail Alignment- Kenneth Hahn



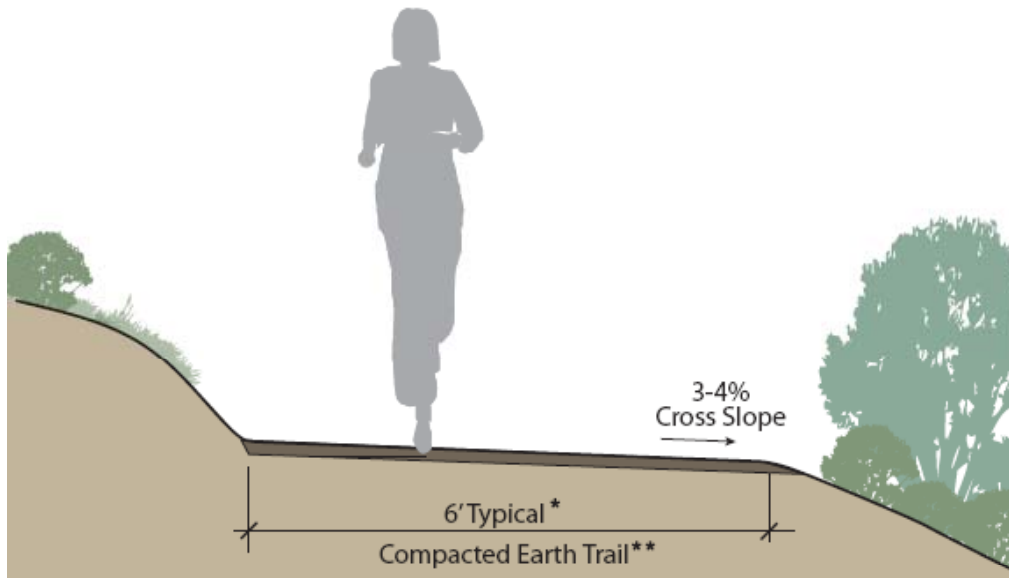


Trail Types



- New Unpaved Trails

- Trail Improvements

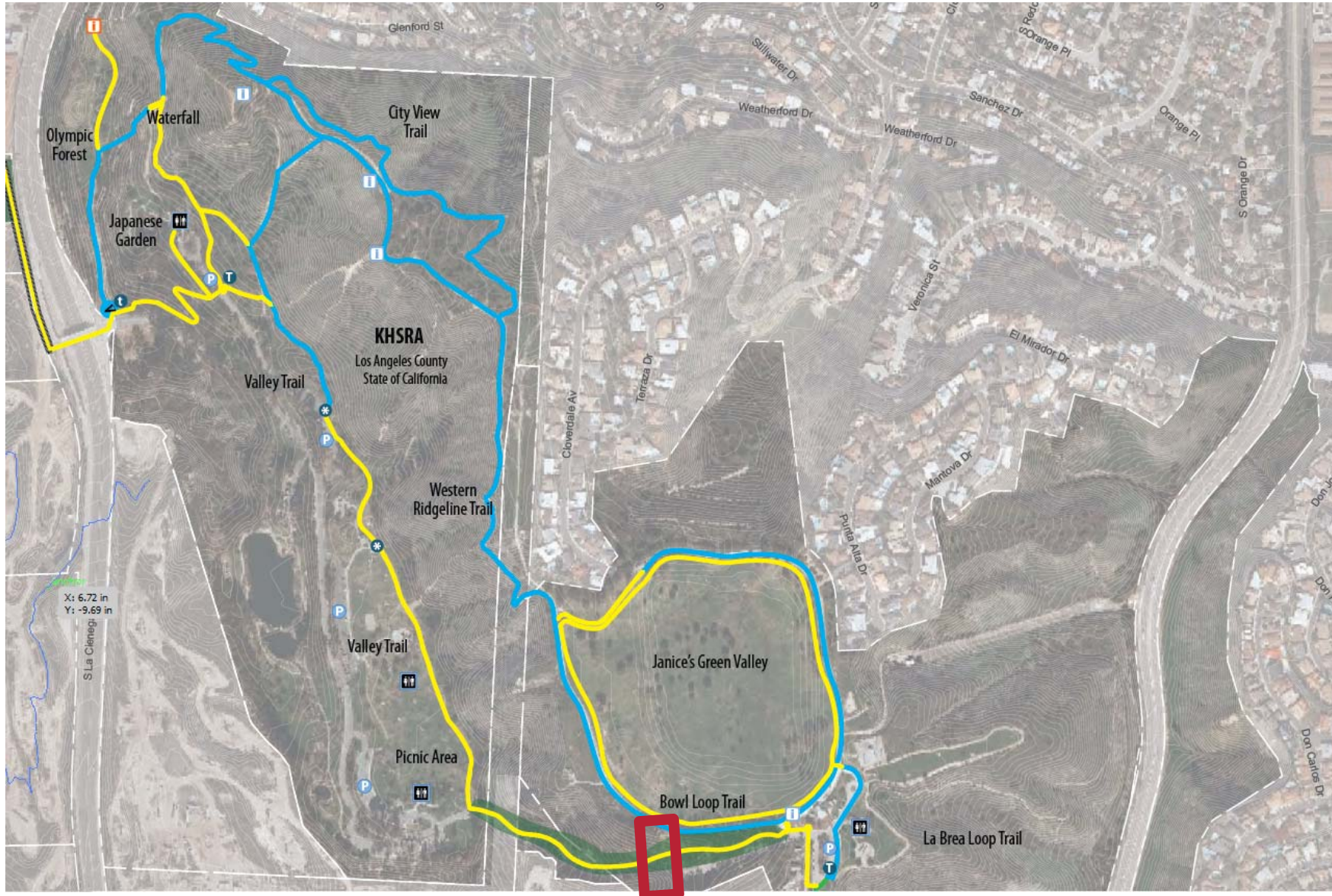


- * Width may be reduced on steep side slopes
- ** Base rock/fines overlay may be needed to provided firm, stable surface



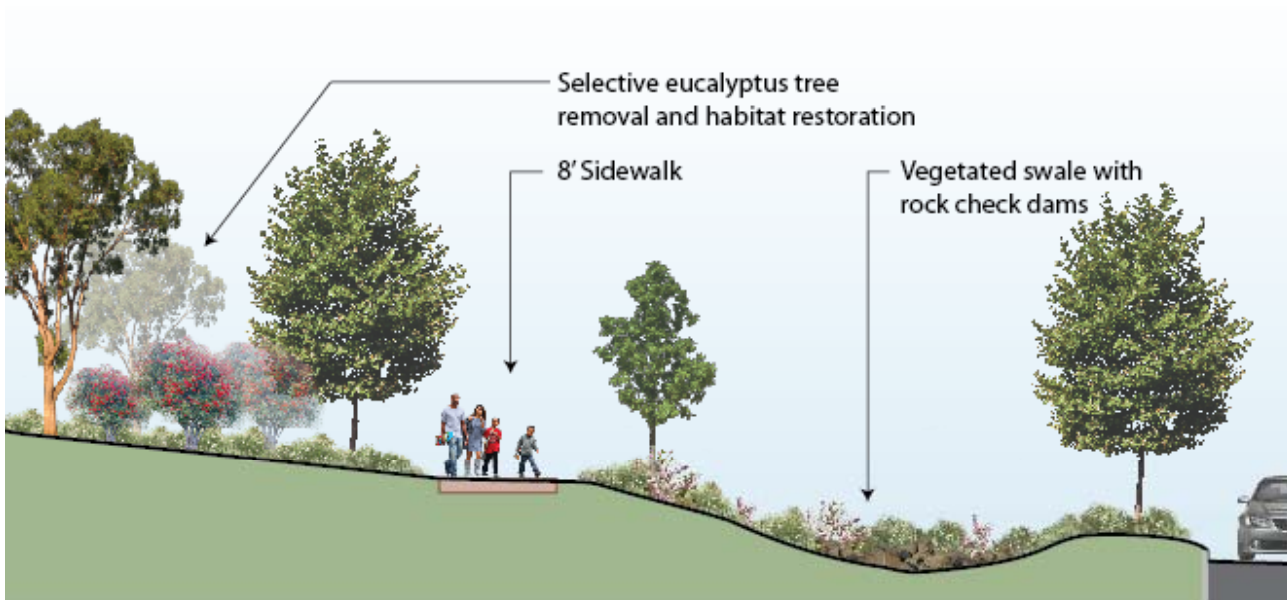
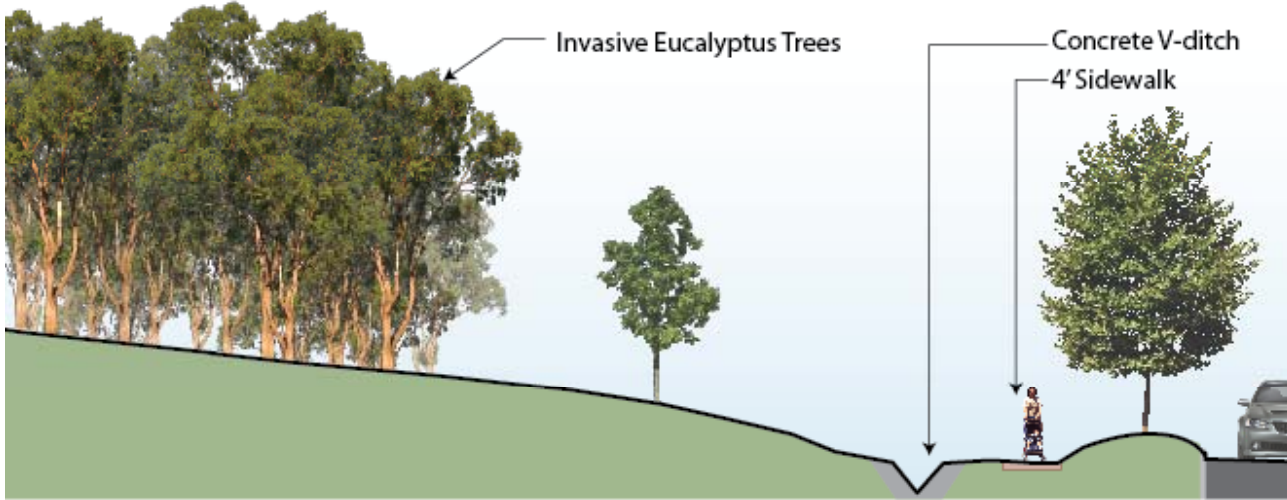


Trail Alignment- Kenneth Hahn





Trail Alignment- Kenneth Hahn



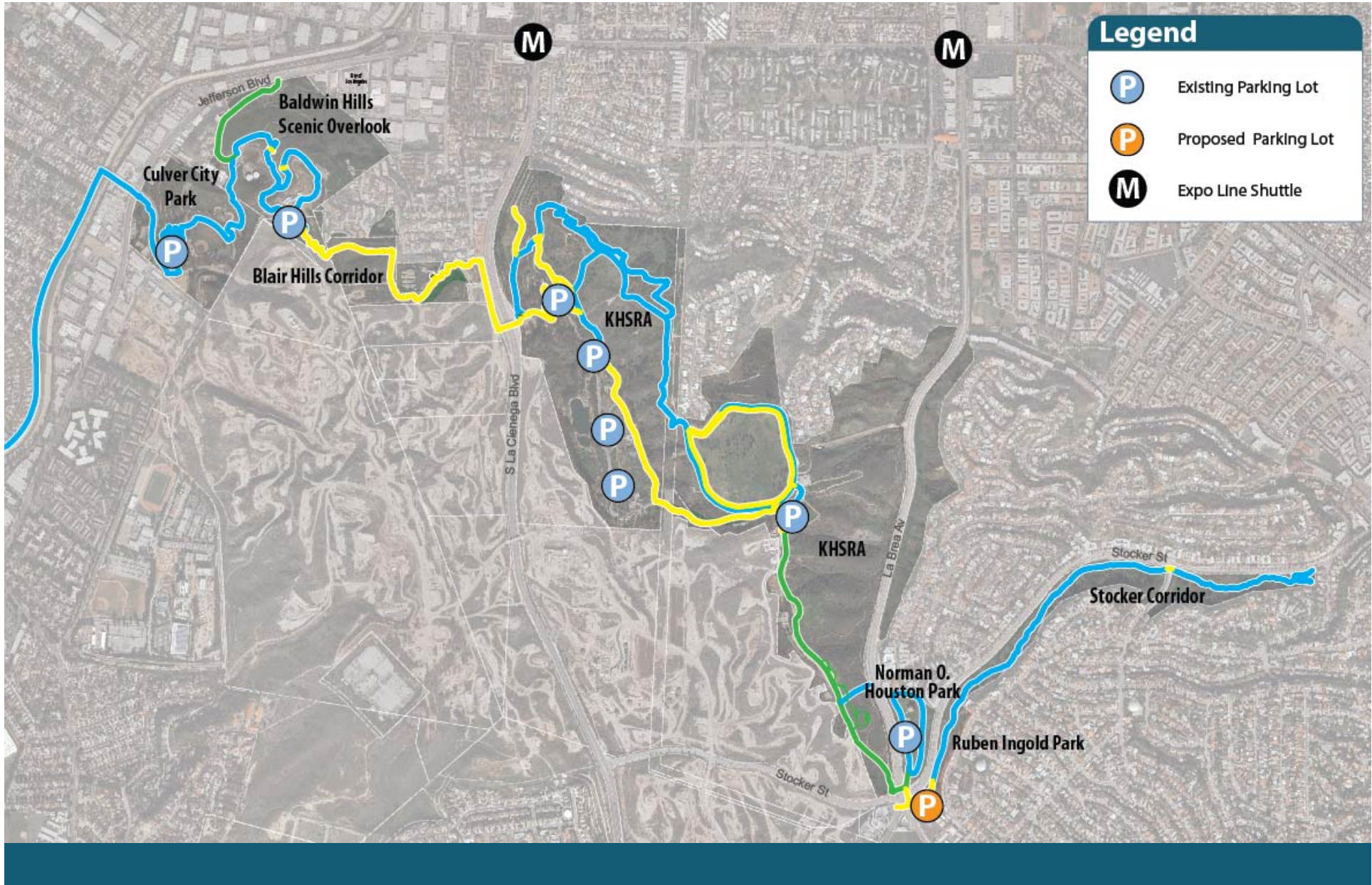


Trail Alignment- Kenneth Hahn





Trail Access- Getting to the Trail



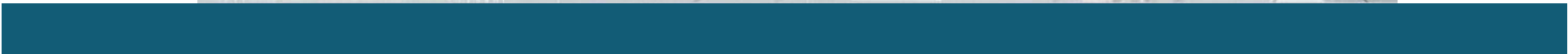


Trail Access- Stocker Trailhead





Trail Access- Stocker Trailhead





Trail Elements



- Trail Gateways
- Fencing & Gates
- Bicycle Parking



Split rail fence



Double wire fence



Trail Elements



- Trail Amenities
 - Shade structures
 - Benches
 - Interpretive elements
 - Native plants
 - Opportunities for Art Installations

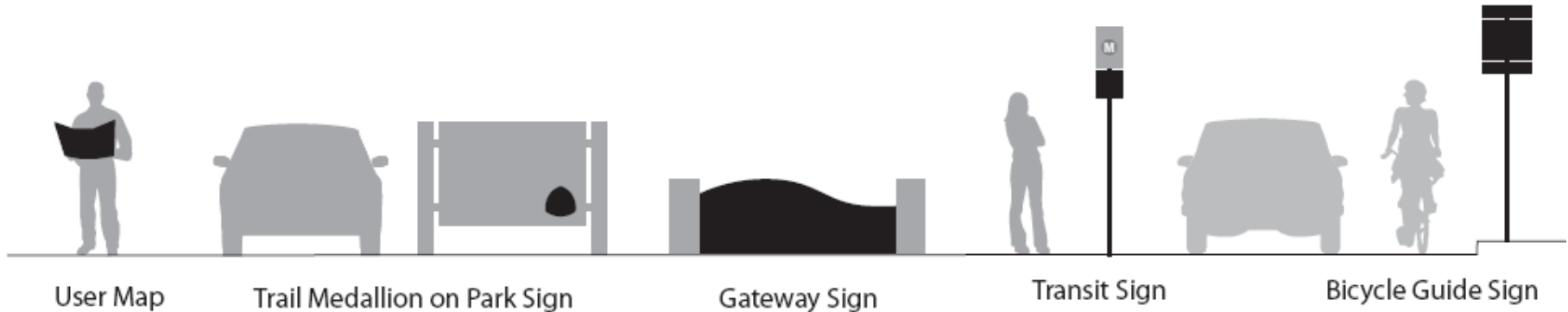




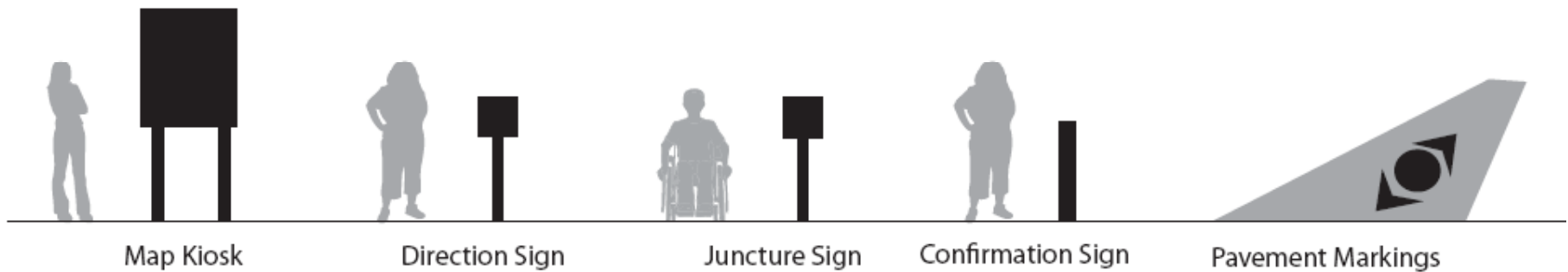
Wayfinding



OFF SITE ELEMENTS



ON TRAIL ELEMENTS

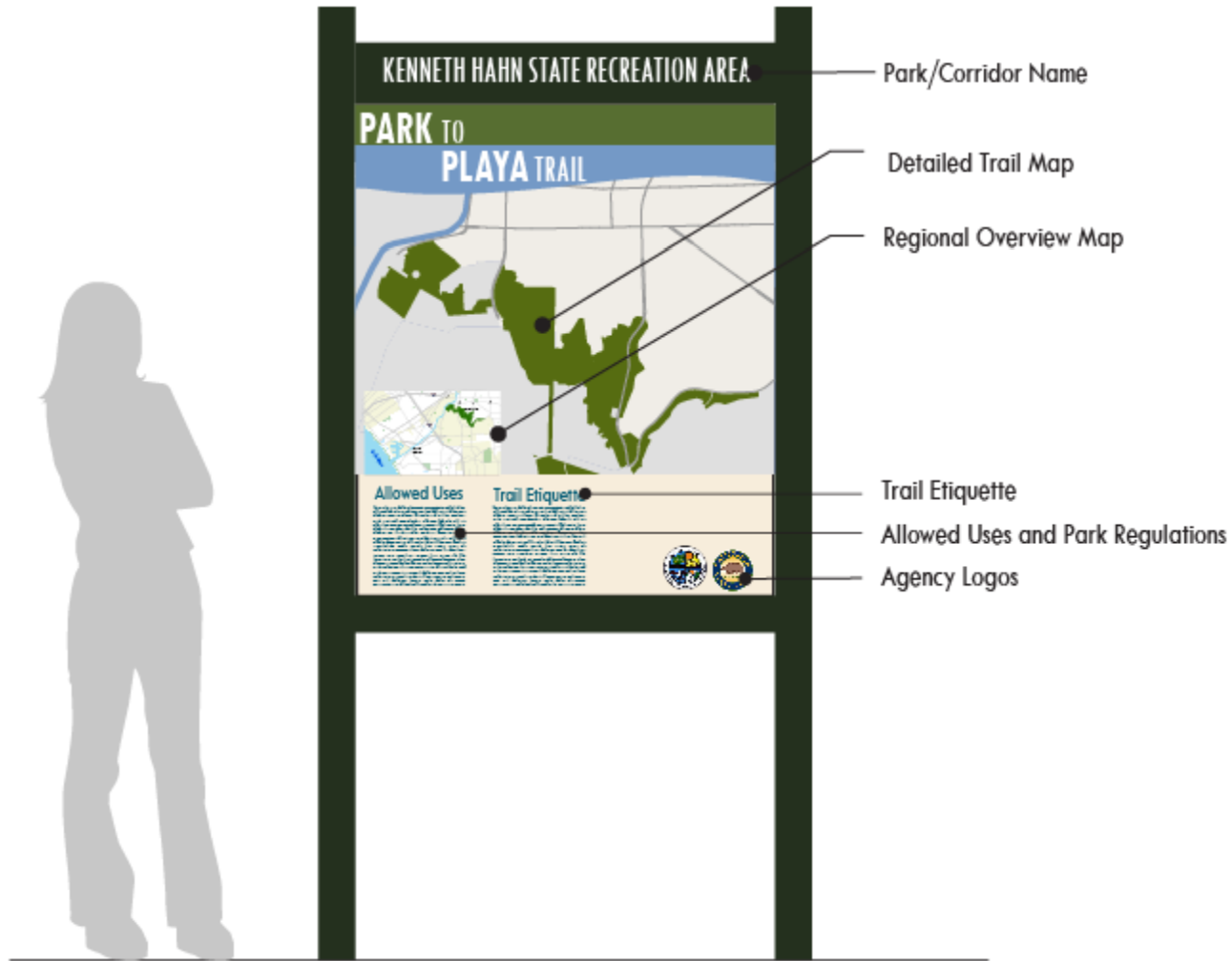




Wayfinding Elements



- Map Kiosk

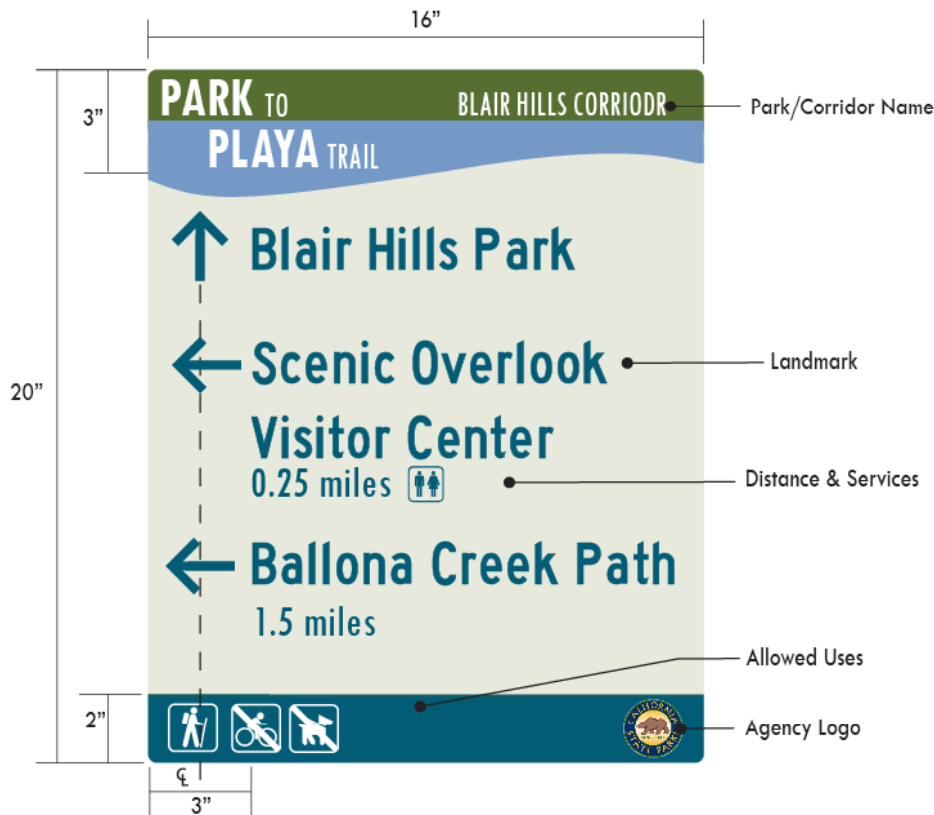




Wayfinding Elements



- Direction Sign



- Juncture Sign

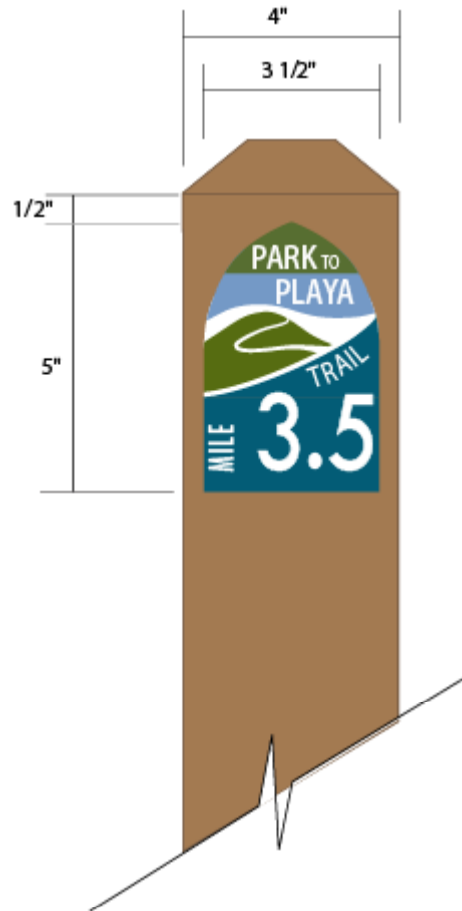




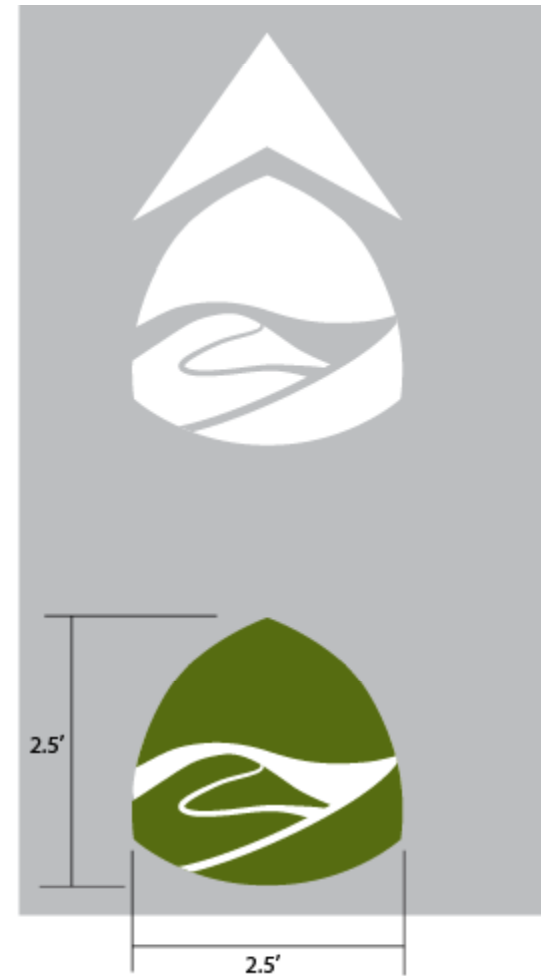
Wayfinding Elements



- Confirmation Sign

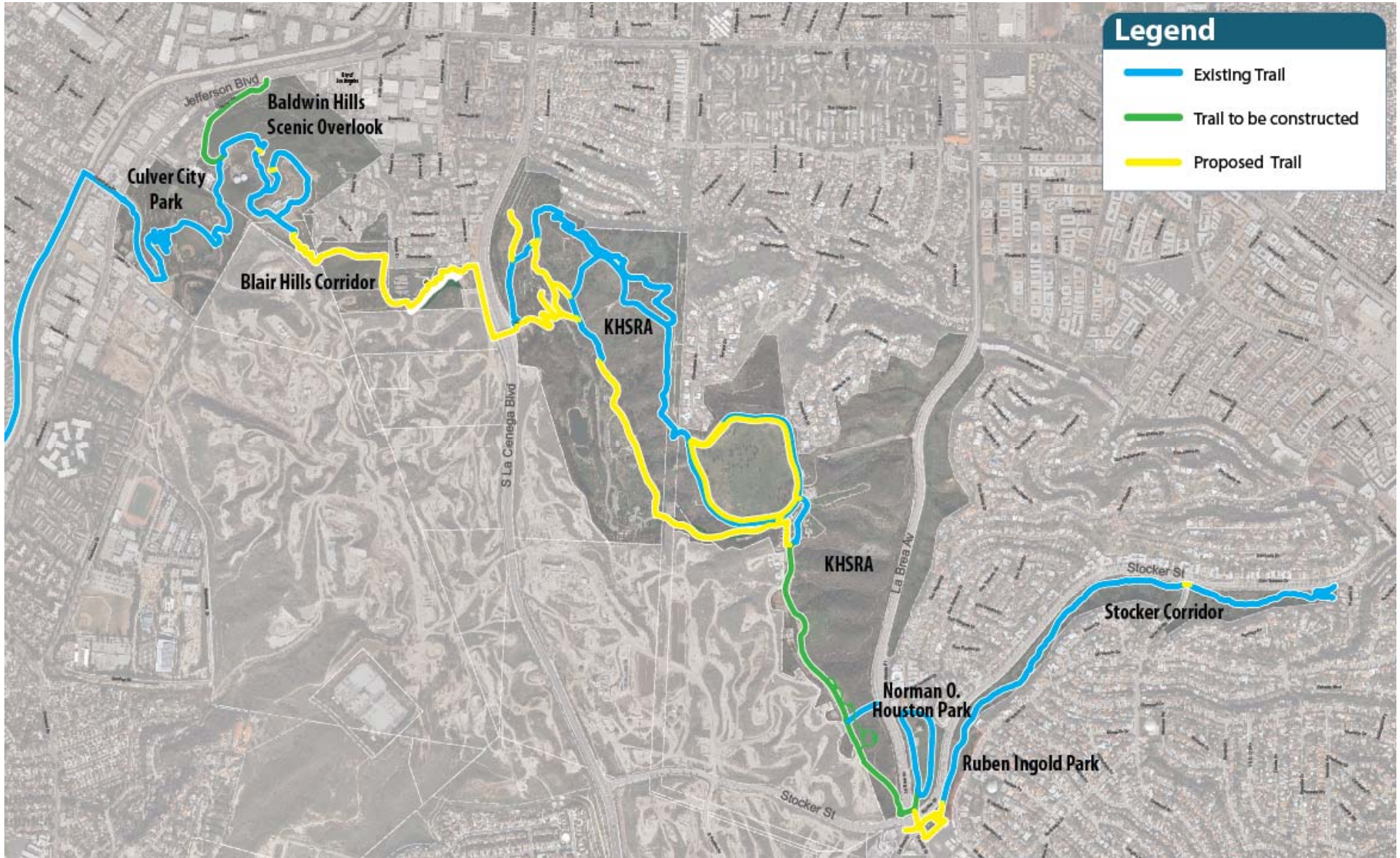


- Pavement Markings





Project Implementation





Next Steps

- KHSRA Eastern Ridge Line Trail and BHSO Hetzler Road improvements in construction this fall
- Construction document phase underway for P2P
- Environmental documentation and permitting
- Trail construction to begin in 2013





Thank you for participating!

Download the workshop materials at:

www.bhc.ca.gov or

<http://smmc.ca.gov/BHRCA.asp> or

www.ridley-thomas.lacounty.gov/environment